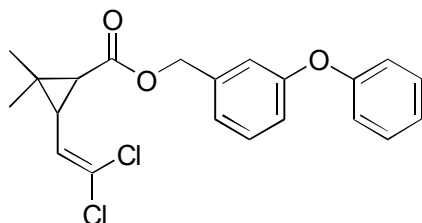


F-13

Permethrin



OA-2000

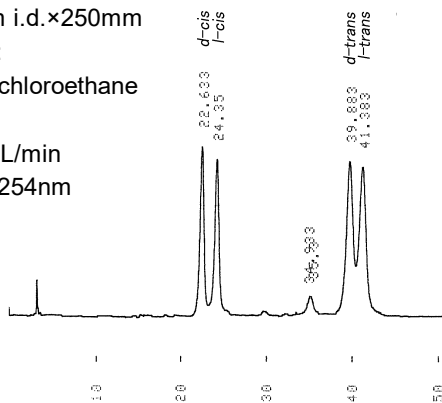
Column : 4mm i.d.×250mm

Mobile phase :

hexane/1,2-dichloroethane
(500/1)

Flow rate : 1mL/min

Detector : UV 254nm



OA-2500I

Column : 4.6mm i.d.×250mm

Mobile phase :

hexane/1,2-dichloroethane
(500/1)

Flow rate : 1mL/min

Detector : UV 230nm

