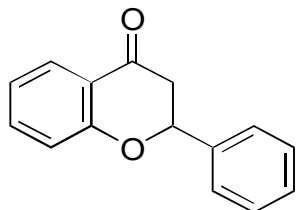


F-10

Flavanone

**OA-7000** $\alpha=2.38$ 

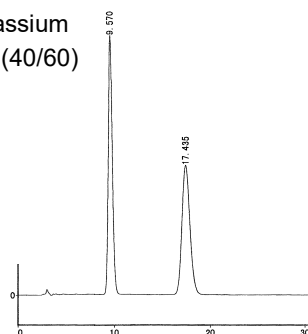
Column : 4.6mm i.d.×250mm

Mobile phase :

acetonitrile/20mmol/L potassium  
phosphate buffer (pH 2.0) (40/60)

Flow rate : 0.85mL/min

Detector : UV 254nm

Injection : 2 $\mu$ L (0.5mg/mL)**OA-4600** $\alpha=1.06$ 

Column : 4.6mm i.d.×250mm

Mobile phase:

hexane/2-propanol (100/0.1)

Flow rate : 1mL/min

Detector : UV 254nm

Injection : 1 $\mu$ L (1mg/mL)