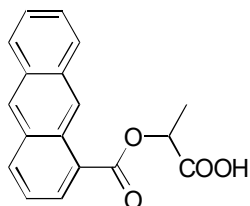


D-19

## O-Anthracene-1-carbonyllactic acid

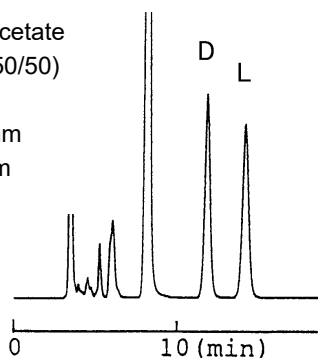
**OA-3200** $\alpha=1.28$ 

Column : 4.6mm i.d.×250mm

Mobile phase :

0.1mol/L ammonium acetate  
in methanol/dioxane (50/50)

Flow rate : 1mL/min

Detector : FL Ex 370nm  
Em 470nm**OA-3300** $\alpha=1.12$ 

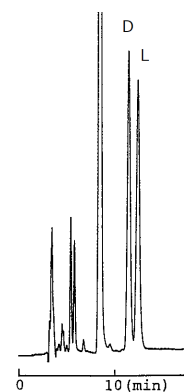
Column : 4.6mm i.d.×250mm

Mobile phase :

0.1mol/L ammonium acetate  
in methanol/dioxane (50/50)

Flow rate : 1mL/min

Detector : UV 254nm

**OA-3100** $\alpha=1.11$ 

Column : 4.6mm i.d.×250mm

Mobile phase :

0.1mol/L ammonium acetate  
in methanol/dioxane (50/50)

Flow rate : 1mL/min

Detector : UV 254nm

