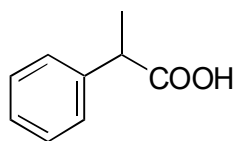
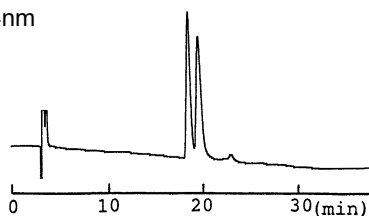
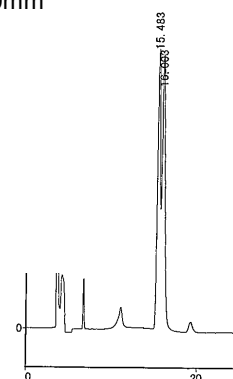


**D-06**      **2-Phenylpropionic acid**
**OA-2500** $\alpha = 1.07$ 

Column : 4.6mm i.d.×250mm  
 Mobile phase :  
 0.01mol/L ammonium acetate  
 in methanol  
 Flow rate : 1mL/min  
 Detector : UV 254nm

**OA-2000** $\alpha = 1.04$ 

Column : 4.6mm i.d.×250mm  
 Mobile phase :  
 hexane/ethanol (95/5)  
 Flow rate : 1mL/min  
 Detector : UV 254nm  
 Injection : 1μL (1mg/mL)

**HSA** $\alpha = 1.31$ 

Column : 4mm i.d.×150mm  
 Mobile phase :  
 acetonitrile/67mmol/L sodium  
 phosphate buffer (pH 6.5) (7.5/92.5)  
 Flow rate : 0.9mL/min  
 Detector : UV 225nm

