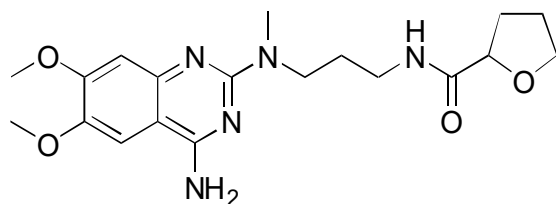


C-23

Alfuzosin

**AGP**

Column : 4mm i.d.×100mm

Mobile phase :

acetonitrile/25mmol/L potassium

phosphate buffer (pH 7.4) (6/94)

containing 25mmol/L

tetrabutylammonium

Flow rate : 0.9mL/min

Detector : EX 265nm, EM 400nm

 $\alpha = 1.35$ 