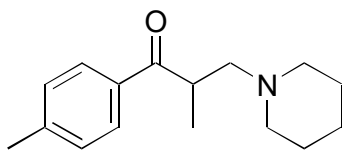


C-06

Tolperisone

**OA-4500** $\alpha = 2.15$

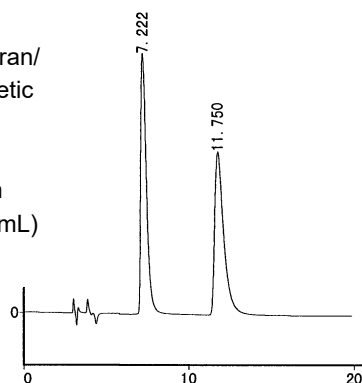
Column : 4.6mm i.d.×250mm

Mobile phase :

hexane/tetrahydrofuran/
methanol/trifluoroacetic
acid (60/35/5/0.2)

Flow rate : 1mL/min

Detector : UV 254nm

Injection : 1 μ L (1mg/mL)**OA-4100** $\alpha = 1.39$

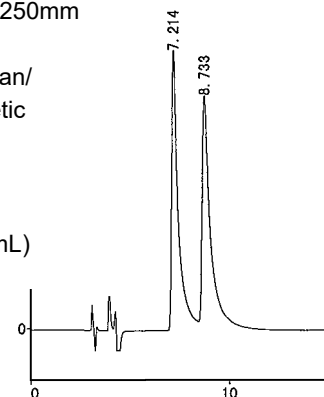
Column : 4.6mm i.d.×250mm

Mobile phase :

hexane/tetrahydrofuran/
methanol/trifluoroacetic
acid (60/38/2/0.2)

Flow rate : 1mL/min

Detector : UV 254nm

Injection : 1 μ L (1mg/mL)**OA-4900** $\alpha = 1.35$

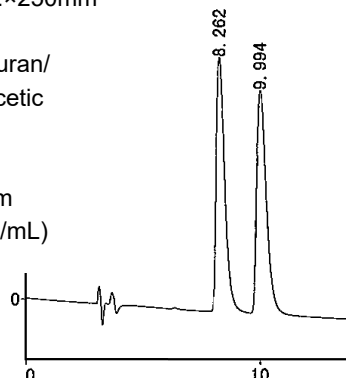
Column : 4.6mm i.d.×250mm

Mobile phase :

hexane/tetrahydrofuran/
methanol/trifluoroacetic
acid (60/35/5/0.2)

Flow rate : 1mL/min

Detector : UV 254nm

Injection : 1 μ L (1mg/mL)**OA-4400** $\alpha = 1.34$

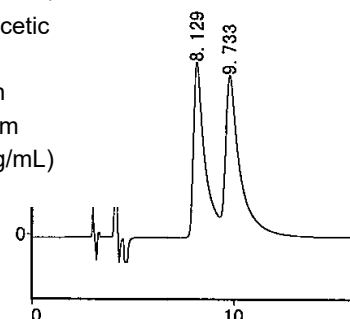
Column : 4.6mm i.d.×250mm

Mobile phase :

hexane/tetrahydrofuran/
methanol/trifluoroacetic
acid (60/38/2/0.2)

Flow rate : 1mL/min

Detector : UV 254nm

Injection : 1 μ L (1mg/mL)**OA-4700** $\alpha = 1.29$

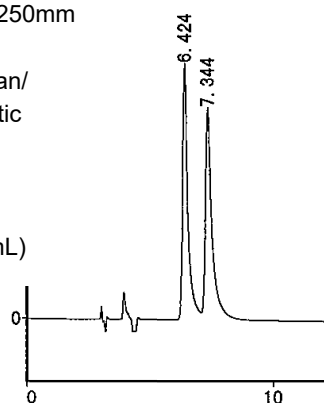
Column : 4.6mm i.d.×250mm

Mobile phase :

hexane/tetrahydrofuran/
methanol/trifluoroacetic
acid (60/38/2/0.2)

Flow rate : 1mL/min

Detector : UV 254nm

Injection : 1 μ L (1mg/mL)**OA-4000** $\alpha = 1.15$

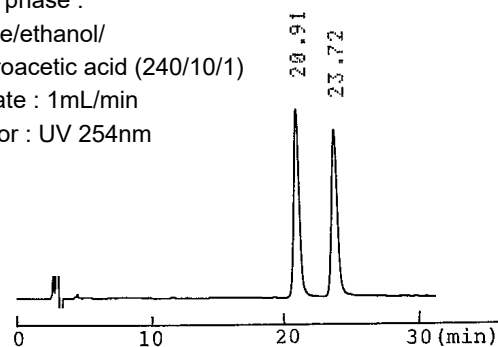
Column : 4.6mm i.d.×250mm

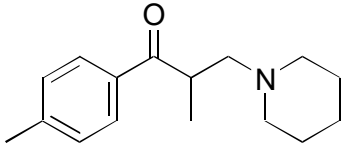
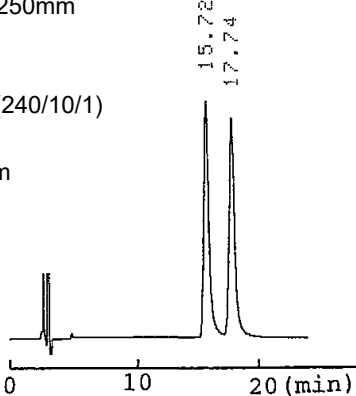
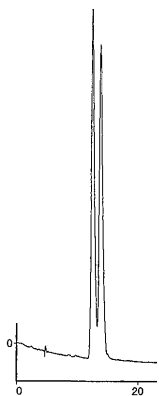
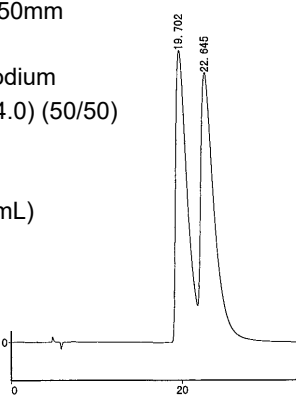
Mobile phase :

hexane/ethanol/
trifluoroacetic acid (240/10/1)

Flow rate : 1mL/min

Detector : UV 254nm



C-06	Tolperisone	
		
<p>OA-4600 $\alpha = 1.15$</p> <p>Column : 4mm i.d.×250mm Mobile phase : hexane/ethanol/ trifluoroacetic acid (240/10/1) Flow rate : 1mL/min Detector : UV 254nm</p> 	<p>OA-7000 $\alpha = 1.16$</p> <p>Column : 4.6mm i.d.×250mm Mobile phase : acetonitrile/20mmol/L potassium phosphate buffer (pH 3.5) (5/95) Flow rate : 0.7mL/min Detector : UV 254nm Injection : 1µL (0.5mg/mL)</p> 	
<p>OA-7100 $\alpha = 1.20$</p> <p>Column : 4.6mm i.d.×250mm Mobile phase : methanol/20mmol/L sodium phosphate buffer (pH 4.0) (50/50) Flow rate : 0.6mL/min Detector : UV 254nm Injection : 2µL (0.5mg/mL)</p> 	<p>AGP $\alpha = 1.41$</p> <p>Column : 4mm i.d.×100mm Mobile phase : 2-propanol/10mmol/L sodium acetate buffer (pH 5.0) (1/99) (total acetate conc.=15mmol/L) Flow rate : 0.9mL/min Detector : UV 225nm</p> 