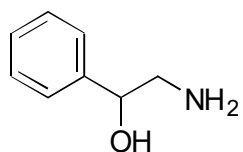


B-15	2-Amino-1-phenyl-ethanol
------	--------------------------

**OA-7700** $\alpha = 1.23$

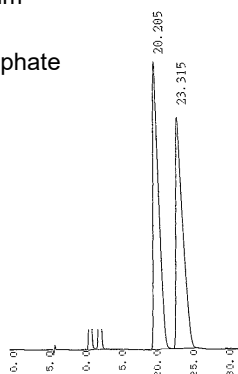
Column : 4.6mm i.d.×250mm

Mobile phase :

20mmol/L potassium phosphate
buffer (pH 3.0)

Flow rate : 0.5mL/min

Detector : UV 254nm

Injection : 2 μ L (10mg/mL)**CBH** $\alpha = 1.10$

Column : 4mm i.d.×100mm

Mobile phase :

5% 2-propanol in 10mmol/L
sodium phosphate buffer
(pH 6.5) + 50 μ mol/L EDTA

Flow rate : 0.5mL/min

Detector : UV 254nm

Injection : 5 μ L (1mg/mL)