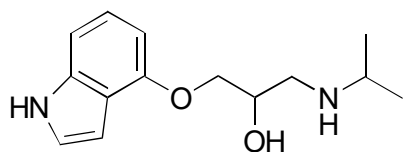


B-06

Pindolol

**OA-4900** $\alpha = 1.12$

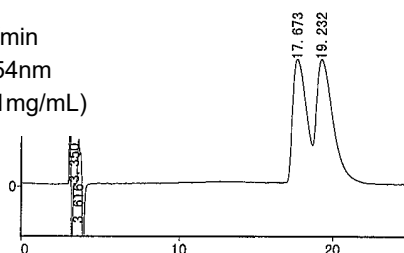
Column : 4.6mm i.d.×250mm

Mobile phase :

hexane/tetrahydrofuran/
methanol/trifluoroacetic acid
(60/35/5/0.2)

Flow rate : 1mL/min

Detector : UV 254nm

Injection : 1 μ L (1mg/mL)**AGP** $\alpha = 1.45$

Column : 4mm i.d.×100mm

Mobile phase :

acetonitrile/10mmol/L sodium
phosphate buffer (pH 7.0) (10/90)

Flow rate : 0.9mL/min

Detector : UV 225nm

