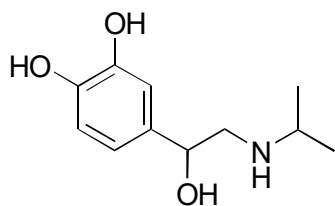


B-02

Isoproterenol

**OA-7700** $\alpha = 1.27$

Column : 4.6mm i.d.×250mm

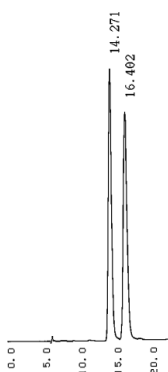
Mobile phase :

20mmol/L KH₂PO₄

Flow rate : 0.5mL/min

Detector : UV 254nm

Injection : 2μL (2mg/mL)

**OA-4900** $\alpha = 1.21$

Column : 4.6mm i.d.×250mm

Mobile phase :

hexane/1,2-dichloroethane/

methanol/trifluoroacetic acid

(240/140/20/1)

Flow rate : 1mL/min

Detector : UV 280nm

Injection : 1μL (5mg/mL)

