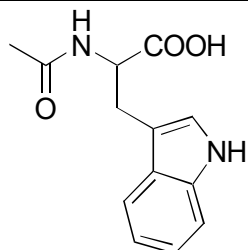


A-36

N-Acetyltryptophan

**OA-4700** $\alpha = 1.25$

Column : 4.6mm i.d. x 250mm

Mobile phase :

hexane/2-propanol/methanol/
trifluoroacetic acid
(90/5/5/0.2)

Flow rate : 1mL/min

Detector : UV 254nm

Injection : 1 μ L (10mg/mL)