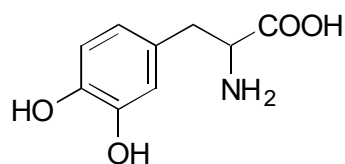
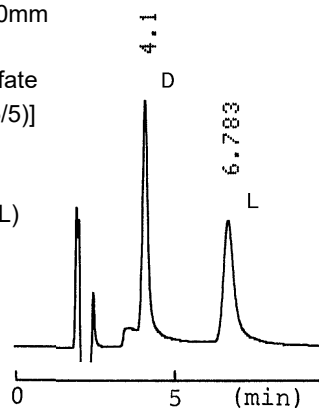


A-06

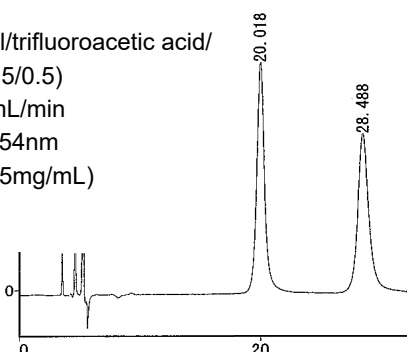
DOPA

**OA-6100** $\alpha = 1.99$

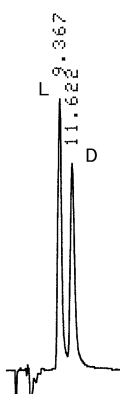
Column : 4.6mm i.d.×150mm
 Mobile phase :
 2mmol/L copper(II) sulfate
 in [water/acetonitrile (95/5)]
 Flow rate : 1mL/min
 Detector : UV 280nm
 Injection : 1 μ L (1.5mg/mL)

**OA-8000** $\alpha = 1.54$

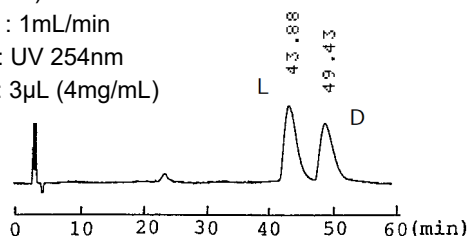
Column : 4.6mm i.d.×250mm
 Mobile phase :
 hexane/ethanol/trifluoroacetic acid/
 water (70/30/0.5/0.5)
 Flow rate : 0.7mL/min
 Detector : UV 254nm
 Injection : 2 μ L (5mg/mL)

**OA-5000** $\alpha = 1.27$

Column : 4.6mm i.d.×150mm
 Mobile phase :
 2mmol/L copper(II) sulfate
 in [water/methanol (70/30)]
 Flow rate : 1mL/min
 Detector : UV 254nm

**OA-4800** $\alpha = 1.14$

Column : 4.6mm i.d.×250mm
 Mobile phase :
 hexane/1,2-dichloroethane/
 methanol/trifluoroacetic acid
 (50/45/5/0.2)
 Flow rate : 1mL/min
 Detector : UV 254nm
 Injection : 3 μ L (4mg/mL)

**OA-4900** $\alpha = 1.09$

Column : 4mm i.d.×250mm
 Mobile phase :
 hexane/1,2-dichloroethane/
 methanol/trifluoroacetic acid
 (50/40/5/1)
 Flow rate : 1mL/min
 Detector : UV 254nm

