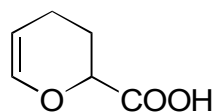


H-13 **3,4-Dihydro-2H-pyran-2-carboxylic acid**
**OA-6100** $\alpha=1.18$

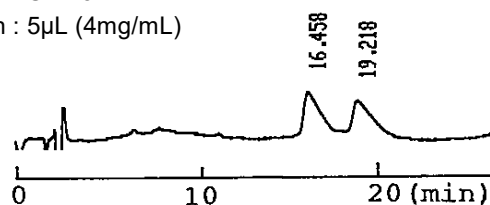
Column : 4.6mm i.d.×150mm

Mobile phase :

2mmol/L copper(II) sulfate
in [water/acetonitrile (95/5)]

Flow rate : 1mL/min

Detector : UV 254nm

Injection : 5 μ L (4mg/mL)**OA-6000** $\alpha=1.15$

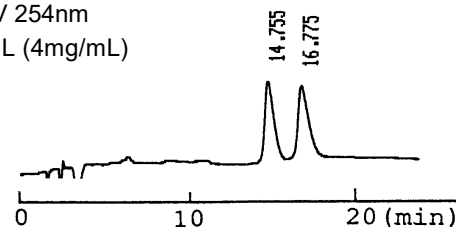
Column : 4.6mm i.d.×150mm

Mobile phase :

2mmol/L copper(II) sulfate
in [water/acetonitrile (90/10)]

Flow rate : 1mL/min

Detector : UV 254nm

Injection : 5 μ L (4mg/mL)**OA-5000** $\alpha=1.09$

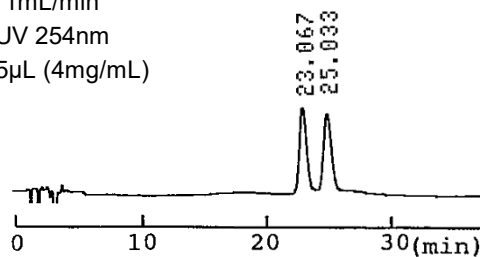
Column : 4.6mm i.d.×150mm

Mobile phase :

2mmol/L copper(II) sulfate
in [water/2-propanol (90/10)]

Flow rate : 1mL/min

Detector : UV 254nm

Injection : 5 μ L (4mg/mL)**OA-3200** $\alpha=1.07$

Column : 4.6mm i.d.×250mm

Mobile phase :

0.01mol/L ammonium
acetate in methanol

Flow rate : 1mL/min

Detector : UV 230nm

