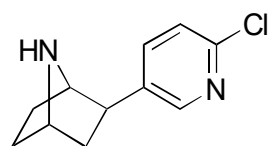


C-41

Epibatidine

**AGP** $\alpha = 1.28$

Column : 4mm i.d. × 100mm

Mobile phase :

acetonitrile/10mmol/L sodium phosphate buffer
(pH 7.4) (3/97) (5mmol/L pentane sulphonic acid
buffer adj.with ortho-phosph.acid)

Flow rate : 0.9mL/min

Detector : UV 215nm

(-)-epibatidine $t_r = 6.68$ min(+)epibatidine $t_r = 8.34$ min $\alpha = 1.28$ $R_s = 2.32$