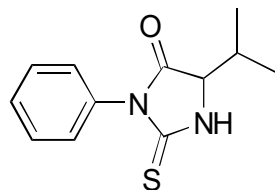


C-16

PTH-valine

**OA-4700** $\alpha = 1.24$

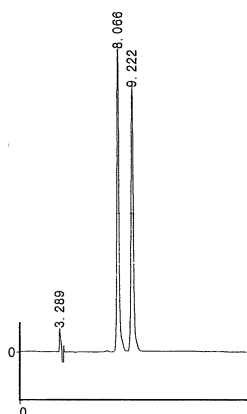
Column : 4.6mm i.d.×250mm

Mobile phase :

hexane/2-propanol/
methanol/trifluoroacetic
acid (90/8/2/0.2)

Flow rate : 1mL/min

Detector : UV 254nm

Injection : 1 μ L (1mg/mL)**OA-4100** $\alpha = 1.15$

Column : 4.6mm i.d.×250mm

Mobile phase :

hexane/2-propanol/
methanol/trifluoroacetic
acid (90/8/2/0.2)

Flow rate : 1mL/min

Detector : UV 254nm

Injection : 1 μ L (1mg/mL)