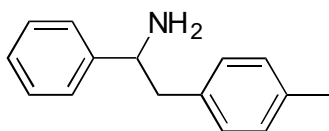
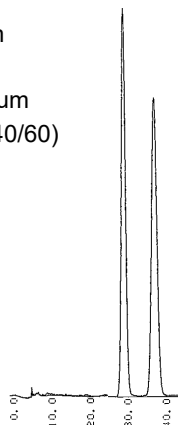
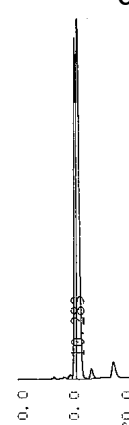


C-04 **1-Phenyl-2-(p-tolyl)ethylamine (PTE)**
**OA-7700** $\alpha = 1.34$

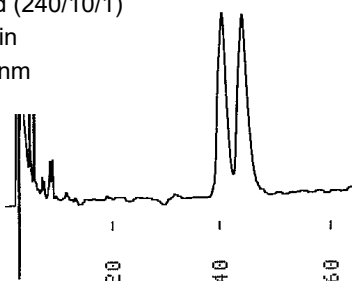
Column : 4.6mm i.d.×250mm
 Mobile phase :
 methanol/20mmol/L potassium
 phosphate buffer (pH 3.0) (40/60)
 Flow rate : 0.5mL/min
 Detector : UV 210nm
 Injection : 1 μ L (10mg/mL)

**OA-7000** $\alpha = 1.10$

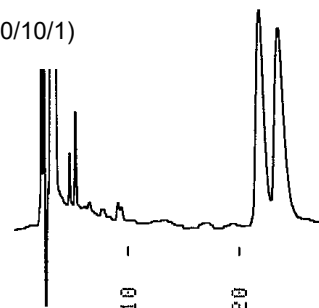
Column : 4.6mm i.d.×250mm
 Mobile phase :
 methanol/20mmol/L potassium
 phosphate buffer (pH 3.0) (40/60)
 Flow rate : 0.5mL/min
 Detector : UV 254nm
 Injection : 2 μ L (10mg/mL)

**OA-4400** $\alpha = 1.09$

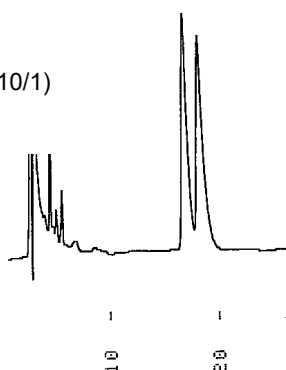
Column : 4mm i.d.×250mm
 Mobile phase :
 hexane/ethanol/
 trifluoroacetic acid (240/10/1)
 Flow rate : 1mL/min
 Detector : UV 254nm

**OA-4500** $\alpha = 1.09$

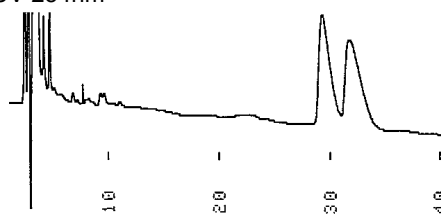
Column : 4mm i.d.×250mm
 Mobile phase :
 hexane/ethanol/
 trifluoroacetic acid (240/10/1)
 Flow rate : 1mL/min
 Detector : UV 254nm

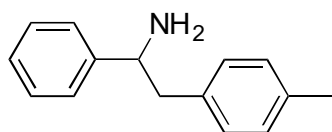
**OA-4700** $\alpha = 1.09$

Column : 4mm i.d.×250mm
 Mobile phase :
 hexane/ethanol/
 trifluoroacetic acid (240/10/1)
 Flow rate : 1mL/min
 Detector : UV 254nm

**OA-4800** $\alpha = 1.09$

Column : 4mm i.d.×250mm
 Mobile phase :
 hexane/ethanol/
 trifluoroacetic acid (240/10/1)
 Flow rate : 1mL/min
 Detector : UV 254nm



C-04 | **1-Phenyl-2-(p-tolyl)ethylamine (PTE)****OA-4100** $\alpha = 1.06$

Column : 4mm i.d. x 250mm x 2

Mobile phase :

hexane/ethanol/

trifluoroacetic acid (240/10/1)

Flow rate : 1mL/min

Detector : UV 254nm

