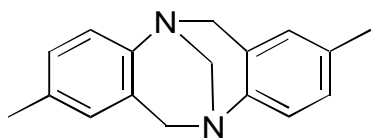


J-05

Troger's base

**OA-2000**

Column : 4.6mm i.d.×250mm

Mobile phase :

hexane/ethanol (95/5)

Flow rate : 1mL/min

Detector : UV 254nm

 $\alpha=1.27$ **OA-2500**

Column : 4.6mm i.d.×250mm

Mobile phase :

hexane/ethanol (95/5)

Flow rate : 1mL/min

Detector : UV 254nm

Injection : 2 $\mu$ L (1mg/mL) $\alpha=1.16$ **OA-7600**

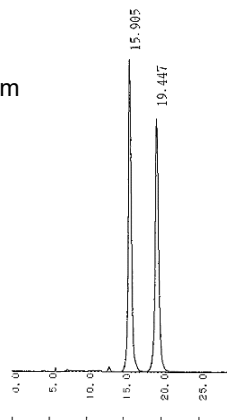
Column : 4.6mm i.d.×250mm

Mobile phase:

methanol/0.1% triethylammonium  
acetate buffer (pH 4.0) (80/20)

Flow rate : 0.5mL/min

Detector : UV 254nm

Injection : 2 $\mu$ L (1mg/mL) $\alpha=1.37$