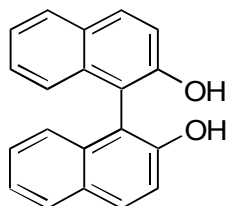


J-03

1,1'-Bi-2-naphthol

**OA-3200** $\alpha=2.97$ 

Column : 4.6mm i.d.×250mm

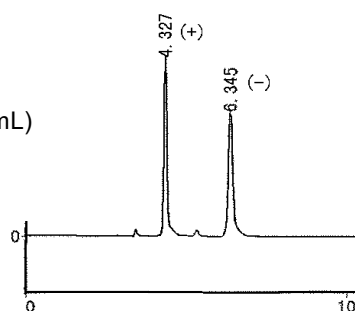
Mobile phase :

hexane/2-propanol/methanol

(70/20/10)

Flow rate : 1mL/min

Detector : UV 254nm

Injection : 1 $\mu$ L (1mg/mL)**OA-3100** $\alpha=2.57$ 

Column : 4.6mm i.d.×250mm

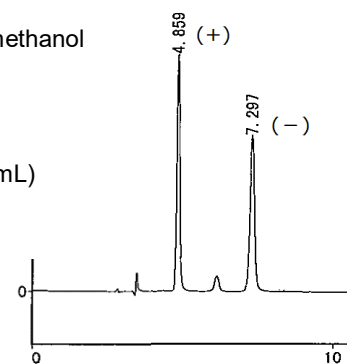
Mobile phase :

hexane/2-propanol/methanol

(70/20/10)

Flow rate : 1mL/min

Detector : UV 254nm

Injection : 1 $\mu$ L (1mg/mL)**OA-3300** $\alpha=1.84$ 

Column : 4.6mm i.d.×250mm

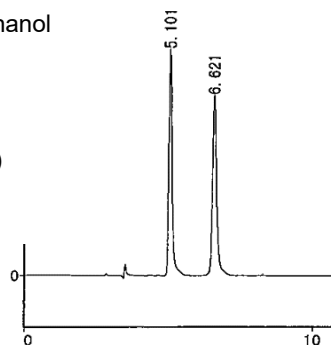
Mobile phase :

hexane/2-propanol/methanol

(70/20/10)

Flow rate : 1mL/min

Detector : UV 254nm

Injection : 1 $\mu$ L (1mg/mL)**OA-4000** $\alpha=1.31$ 

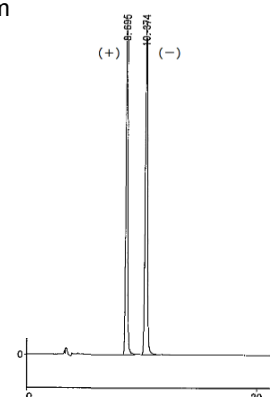
Column : 4.6mm i.d.×250mm

Mobile phase :

hexane/ethanol (93/7)

Flow rate : 1mL/min

Detector : UV 254nm

Injection : 1 $\mu$ L (1mg/mL)**OA-4600** $\alpha=1.30$ 

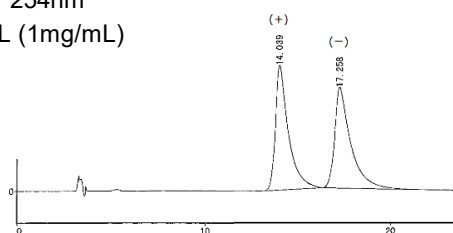
Column : 4.6mm i.d.×250mm

Mobile phase :

hexane/ethanol (93/7)

Flow rate : 1mL/min

Detector : UV 254nm

Injection : 1 $\mu$ L (1mg/mL)**OA-2000** $\alpha=1.26$ 

Column : 4.6mm i.d.×250mm

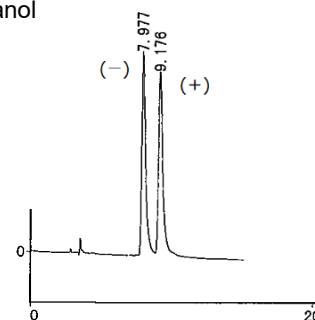
Mobile phase :

hexane/2-propanol/methanol

(70/20/10)

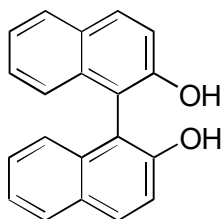
Flow rate : 1mL/min

Detector : UV 254nm

Injection : 1 $\mu$ L (1mg/mL)

J-03

1,1'-Bi-2-naphthol

**OA-2500I** $\alpha=1.24$ 

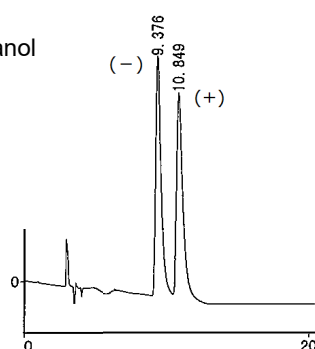
Column : 4.6mm i.d.×250mm

Mobile phase :

hexane/2-propanol/methanol  
(70/20/10)

Flow rate : 1mL/min

Detector : UV 254nm

Injection : 2 $\mu$ L (1mg/mL)**OA-4700** $\alpha=1.16$ 

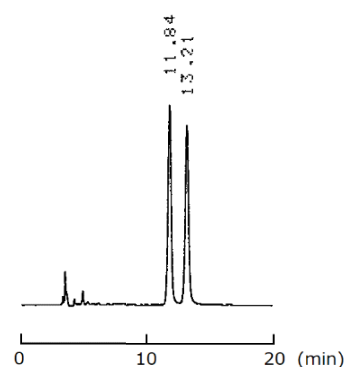
Column : 4.6mm i.d.×250mm

Mobile phase :

hexane/ethanol (95/5)

Flow rate : 1mL/min

Detector : UV 254nm

**OA-4100** $\alpha=1.16$ 

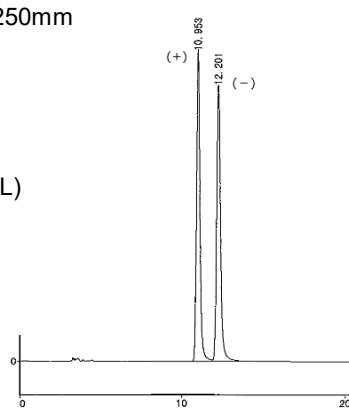
Column : 4.6mm i.d.×250mm

Mobile phase :

hexane/ethanol (93/7)

Flow rate : 1mL/min

Detector : UV 254nm

Injection : 1 $\mu$ L (1mg/mL)**OA-4400** $\alpha=1.14$ 

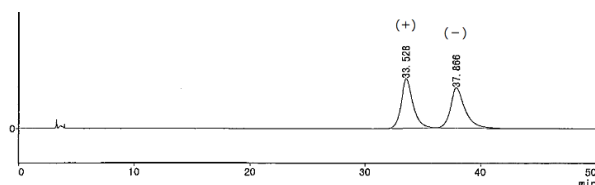
Column : 4.6mm i.d.×250mm

Mobile phase :

hexane/ethanol (93/7)

Flow rate : 1mL/min

Detector : UV 254nm

Injection : 1 $\mu$ L (1mg/mL)**OA-4500** $\alpha=1.07$ 

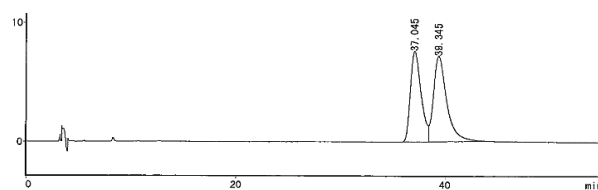
Column : 4.6mm i.d.×250mm

Mobile phase :

hexane/ethanol (93/7)

Flow rate : 1mL/min

Detector : UV 254nm

Injection : 1 $\mu$ L (1mg/mL)**OA-4800** $\alpha=1.08$ 

Column : 4.6mm i.d.×250mm

Mobile phase :

hexane/ethanol (93/7)

Flow rate : 1mL/min

Detector : UV 254nm

Injection : 1 $\mu$ L (1mg/mL)