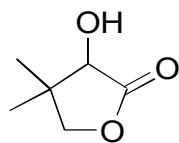


I-01

Pantolactone

**OA-4100** $\alpha=1.09$

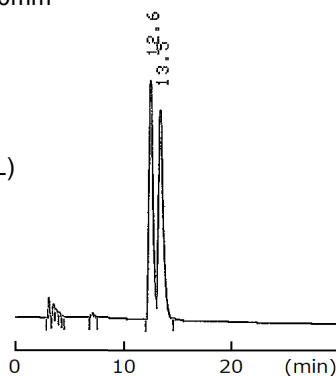
Column : 4.6mm i.d.×250mm

Mobile phase :

hexane/ethanol (95/5)

Flow rate : 1mL/min

Detector : UV 230nm

Injection : 5 μ L (10mg/mL)**OA-4400** $\alpha=1.08$

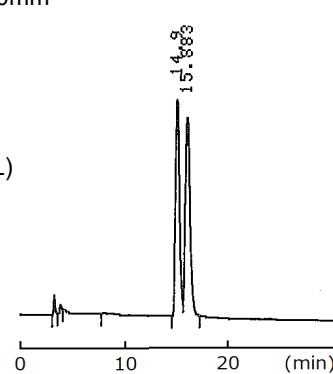
Column : 4.6mm i.d.×250mm

Mobile phase :

hexane/ethanol (95/5)

Flow rate : 1mL/min

Detector : UV 230nm

Injection : 5 μ L (10mg/mL)**OA-4800** $\alpha=1.07$

Column : 4.6mm i.d.×250mm

Mobile phase :

hexane/ethanol (95/5)

Flow rate : 1mL/min

Detector : UV 230nm

Injection : 5 μ L (10mg/mL)