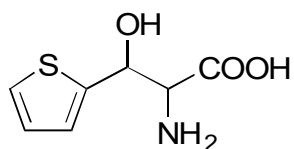


G-57

3-(2-Thienyl)serine

**OA-4800**

Column : 4.6mm i.d.×250mm

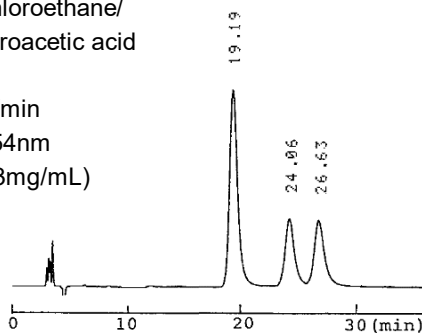
Mobile phase :

hexane/1,2-dichloroethane/
methanol/trifluoroacetic acid
(50/45/5/0.2)

Flow rate : 1mL/min

Detector : UV 254nm

Injection : 3μL (3mg/mL)

**OA-4900**

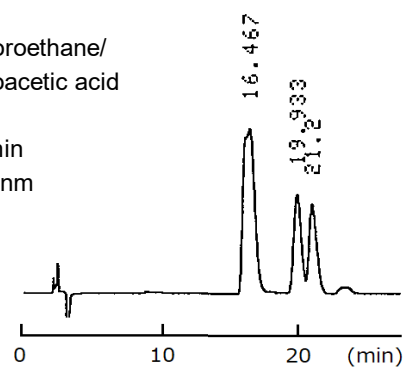
Column : 4mm i.d.×250mm

Mobile phase :

hexane/1,2-dichloroethane/
methanol/trifluoroacetic acid
(50/40/5/1)

Flow rate : 1mL/min

Detector : UV 254nm

**OA-5000**

Column : 4.6mm i.d.×150mm

Mobile phase :

2mmol/L copper(II) sulfate
in [water/methanol (70/30)]

Flow rate : 1mL/min

Detector : UV 254nm

