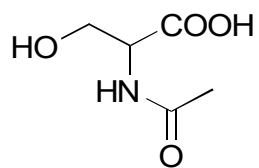


G-50

N-Acetylserine

**OA-4700** $\alpha = 1.18$ 

Column : 4.6mm i.d.×250mm

Mobile phase :

hexane/2-propanol/methanol/  
trifluoroacetic acid (90/5/5/0.2)

Flow rate : 1mL/min

Detector : UV 230nm

Injection : 2 $\mu$ L (10mg/mL)