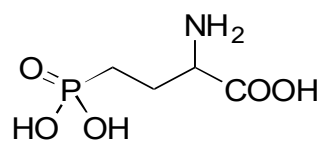


**G-45**    **2-Amino-4-phosphonobutyric acid****OA-5000** $\alpha=1.31$ 

Column : 4.6mm i.d.×150mm

Mobile phase :

2mmol/L copper( II ) sulfate  
in [water/acetonitrile (95/5)]

Flow rate : 1mL/min

Detector : UV 254nm

Injection : 5 $\mu$ L (2mg/mL)