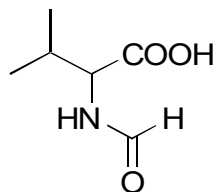


G-41

N-Formylvaline

**OA-5000** $\alpha=1.37$ 

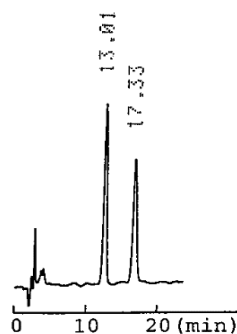
Column : 4.6mm i.d.×150mm

Mobile phase :

2mmol/L copper( II ) sulfate  
in [water/acetonitrile (85/15)]

Flow rate : 1mL/min

Detector : UV 254nm

**OA-4700** $\alpha=1.16$ 

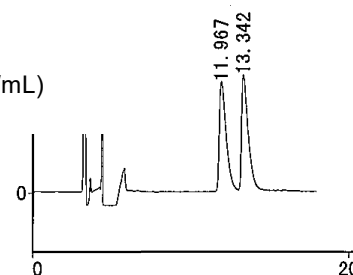
Column : 4.6mm i.d.×250mm

Mobile phase :

hexane/2-propanol/methanol/  
trifluoroacetic acid (90/8/2/0.2)

Flow rate : 1mL/min

Detector : UV 230nm

Injection : 5 $\mu$ L (10mg/mL)**OA-4600** $\alpha=1.06$ 

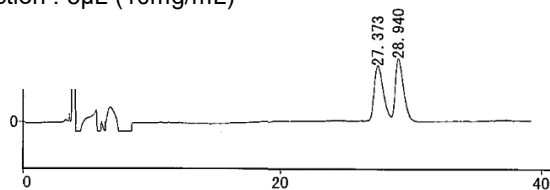
Column : 4.6mm i.d.×250mm

Mobile phase :

hexane/2-propanol/methanol/  
trifluoroacetic acid (95/3/2/0.2)

Flow rate : 1mL/min

Detector : UV 230nm

Injection : 5 $\mu$ L (10mg/mL)**OA-4400** $\alpha=1.09$ 

Column : 4.6mm i.d.×250mm

Mobile phase :

hexane/2-propanol/methanol/  
trifluoroacetic acid (90/8/2/0.2)

Flow rate : 1mL/min

Detector : UV 230nm

Injection : 5 $\mu$ L (10mg/mL)