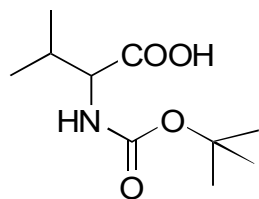


G-26

BOC-valine

**OA-4700** $\alpha=1.14$ 

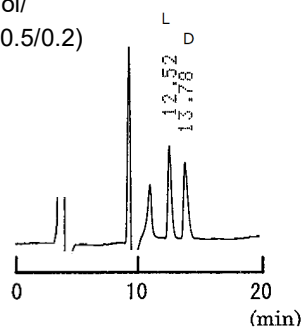
Column : 4.6mm i.d.×250mm

Mobile phase :

hexane/2-propanol/methanol/  
trifluoroacetic acid (100/1/0.5/0.2)

Flow rate : 1mL/min

Detector : UV 230nm

Injection : 2 $\mu$ L (17mg/mL)**OA-4400** $\alpha=1.15$ 

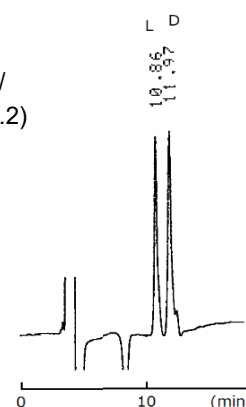
Column : 4.6mm i.d.×250mm

Mobile phase :

hexane/2-propanol/methanol/  
trifluoroacetic acid (98/1/1/0.2)

Flow rate : 1mL/min

Detector : UV 254nm

Injection : 3 $\mu$ L (17mg/mL)**OA-3300** $\alpha=1.10$ 

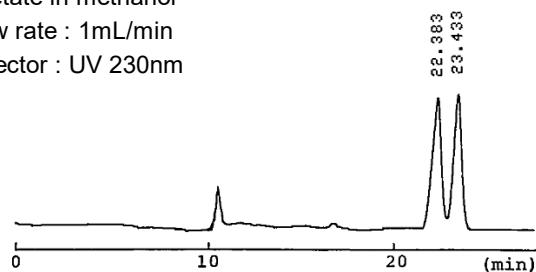
Column : 4mm i.d.×250mm

Mobile phase :

0.01mol/L ammonium  
acetate in methanol

Flow rate : 1mL/min

Detector : UV 230nm

**AGP** $\alpha=1.43$ 

Column : 4mm i.d.×100mm

Mobile phase :

acetonitrile/10mmol/L sodium  
phosphate buffer (pH 5.0) (3/97)

Flow rate : 0.9mL/min

Detector : UV 200nm

