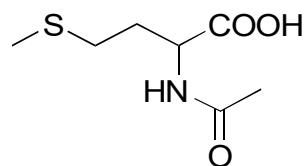


G-25

N-Acetylmethionine

**OA-4700** $\alpha=1.36$

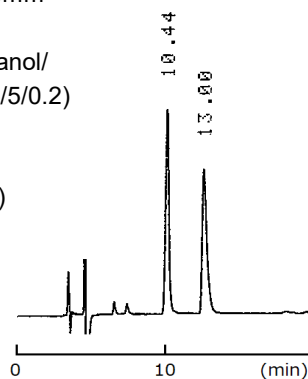
Column : 4.6mm i.d.×250mm

Mobile phase :

hexane/2-propanol/methanol/
trifluoroacetic acid (90/5/5/0.2)

Flow rate : 1mL/min

Detector : UV 230nm

Injection : 2 μ L (10mg/mL)**OA-5000** $\alpha=1.27$

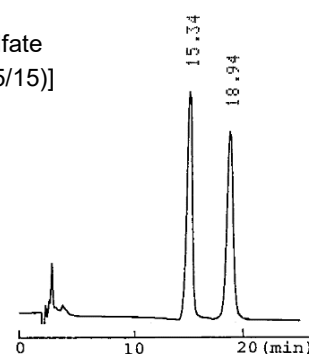
Column : 4.6mm i.d.×150mm

Mobile phase :

2mmol/L copper(II) sulfate
in [water/acetonitrile (85/15)]

Flow rate : 1mL/min

Detector : UV 254nm

**OA-3200** $\alpha=1.06$

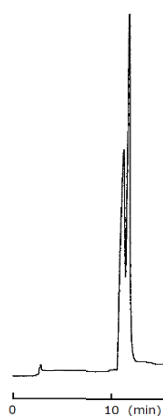
Column : 4mm i.d.×250mm

Mobile phase :

0.01mol/L ammonium
acetate in methanol

Flow rate : 1mL/min

Detector : UV 230nm

**OA-3300** $\alpha=1.05$

Column : 4mm i.d.×250mm

Mobile phase :

0.01mol/L ammonium
acetate in methanol

Flow rate : 1mL/min

Detector : UV 230nm

