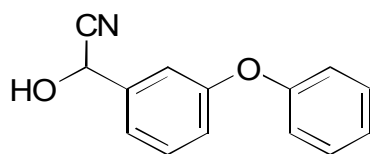
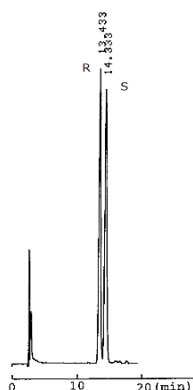


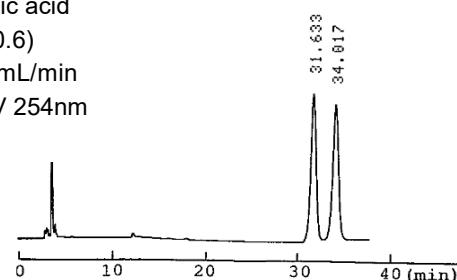
E-05

 α -Cyano-3-phenoxybenzylalcohol**OA-4100** $\alpha = 1.08$

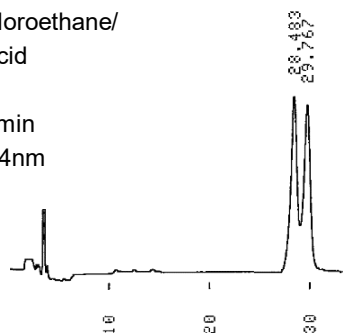
Column : 4mm i.d.×250mm
 Mobile phase :
 hexane/1,2-dichloroethane/
 ethanol/acetic acid
 (500/150/5/0.6)
 Flow rate : 1mL/min
 Detector : UV 254nm

**OA-4400** $\alpha = 1.08$

Column : 4mm i.d.×250mm
 Mobile phase :
 hexane/1,2-dichloroethane/
 ethanol/acetic acid
 (500/150/5/0.6)
 Flow rate : 1mL/min
 Detector : UV 254nm

**OA-4500** $\alpha = 1.05$

Column : 4mm i.d.×250mm
 Mobile phase :
 hexane/1,2-dichloroethane/
 ethanol/acetic acid
 (500/150/5/0.6)
 Flow rate : 1mL/min
 Detector : UV 254nm

**OA-4700** $\alpha = 1.09$

Column : 4mm i.d.×250mm
 Mobile phase :
 hexane/1,2-dichloroethane/
 ethanol/acetic acid
 (500/150/5/0.6)
 Flow rate : 1mL/min
 Detector : UV 254nm

