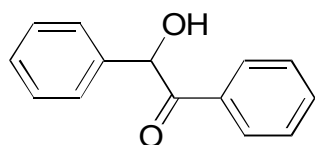


E-04

Benzoin

**OA-4900** $\alpha=1.14$

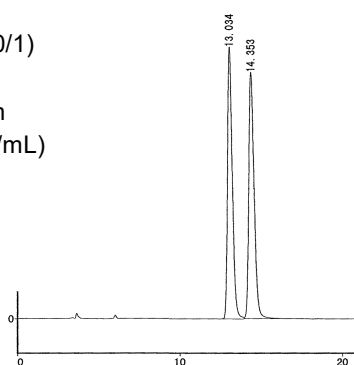
Column : 4.6mm i.d.×250mm

Mobile phase :

hexane/ethanol (100/1)

Flow rate : 1mL/min

Detector : UV 254nm

Injection : 1 μ L (1mg/mL)**OA-2500I** $\alpha=1.10$

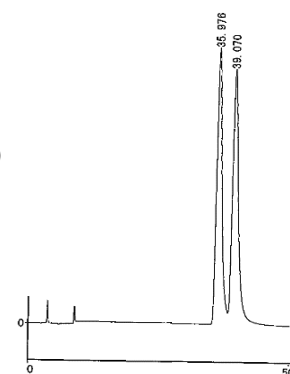
Column : 4.6mm i.d.×250mm

Mobile phase:

hexane/ethanol (99/1)

Flow rate : 1mL/min

Detector : UV 254nm

Injection : 1 μ L (1mg/mL)**OA-7000** $\alpha=1.07$

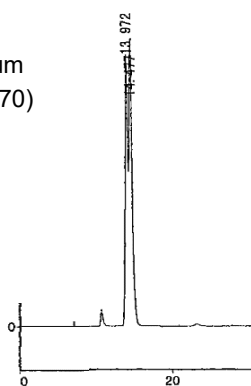
Column : 4.6mm i.d.×250mm

Mobile phase :

acetonitrile/20mmol/L potassium
phosphate buffer (pH 3.5) (30/70)

Flow rate : 0.5mL/min

Detector : UV 254nm

**AGP** $\alpha=1.25$

Column : 4mm i.d.×100mm

Mobile phase :

methanol/10mmol/L sodium
phosphate buffer (pH 6.0) (5/95)

Flow rate : 0.9mL/min

Detector : UV 225nm

