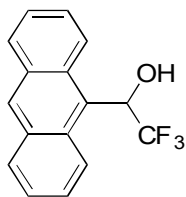


E-03

**2,2,2-Trifluoro-1-(9-anthryl)ethanol****OA-2000** $\alpha=1.40$ 

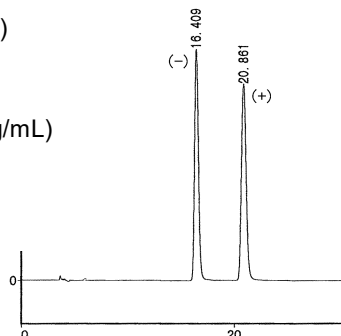
Column : 4.6mm i.d.×250mm

Mobile phase :

hexane/ethanol (95/5)

Flow rate : 1mL/min

Detector : UV 254nm

Injection : 0.5 $\mu$ L (1mg/mL)**OA-2500I** $\alpha=1.39$ 

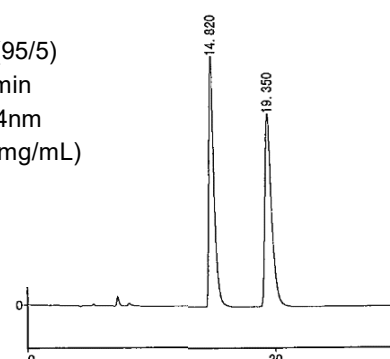
Column : 4.6mm i.d.×250mm

Mobile phase :

hexane/ethanol (95/5)

Flow rate : 1mL/min

Detector : UV 254nm

Injection : 3 $\mu$ L (1mg/mL)**OA-2500** $\alpha=1.28$ 

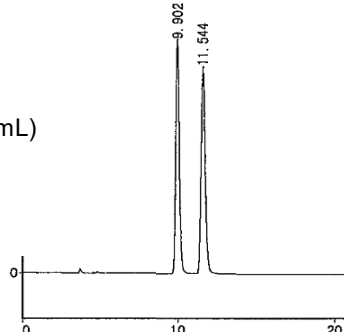
Column : 4.6mm i.d.×250mm

Mobile phase :

hexane/ethanol (95/5)

Flow rate : 1mL/min

Detector : UV 254nm

Injection : 0.5 $\mu$ L (1mg/mL)**OA-3100** $\alpha=1.07$ 

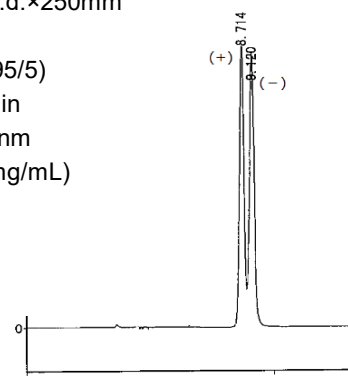
Column : 4.6mm i.d.×250mm

Mobile phase :

hexane/ethanol (95/5)

Flow rate : 1mL/min

Detector : UV 254nm

Injection : 1 $\mu$ L (1mg/mL)**OA-3200** $\alpha=1.11$ 

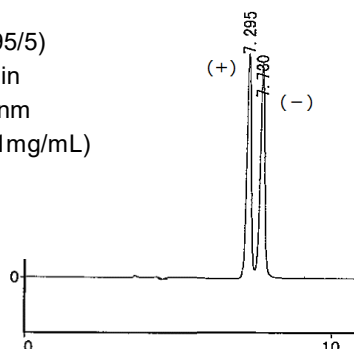
Column : 4.6mm i.d.×250mm

Mobile phase :

hexane/ethanol (95/5)

Flow rate : 1mL/min

Detector : UV 254nm

Injection : 0.5 $\mu$ L (1mg/mL)**OA-3300** $\alpha=1.13$ 

Column : 4.6mm i.d.×250mm

Mobile phase :

hexane/ethanol (95/5)

Flow rate : 1mL/min

Detector : UV 254nm

Injection : 0.5 $\mu$ L (1mg/mL)