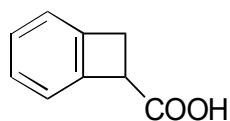


D-22	1-Benzocyclobutenecarboxylic acid
-------------	--

**OA-7500** $\alpha=1.39$

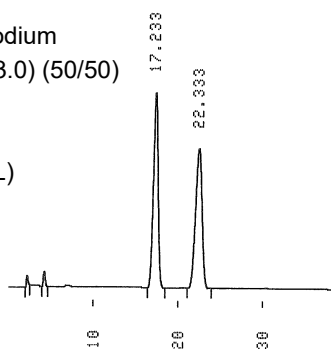
Column : 4.6mm i.d.×250mm

Mobile phase :

methanol/10mmol/L sodium phosphate buffer (pH 3.0) (50/50)

Flow rate : 0.7mL/min

Detector : UV 230nm

Injection : 5 μ L (1mg/mL)**OA-3100** $\alpha=1.10$

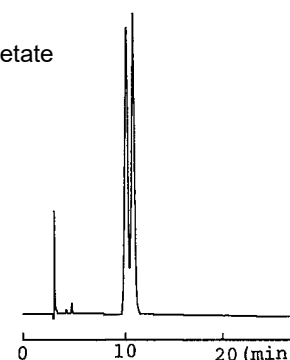
Column : 4.6mm i.d.×250mm

Mobile phase :

0.01mol/L ammonium acetate in methanol

Flow rate : 1mL/min

Detector : UV 254nm

**OA-3200** $\alpha=1.10$

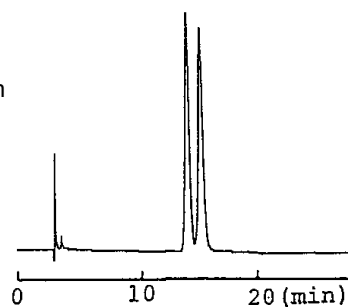
Column : 4.6mm i.d.×250mm

Mobile phase :

0.01mol/L ammonium acetate in methanol

Flow rate : 1mL/min

Detector : UV 254nm

**OA-3300** $\alpha=1.07$

Column : 4.6mm i.d.×250mm

Mobile phase :

0.01mol/L ammonium acetate in methanol

Flow rate : 1mL/min

Detector : UV 254nm

