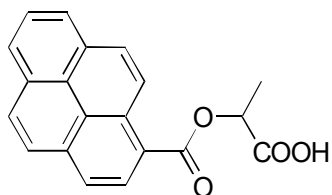


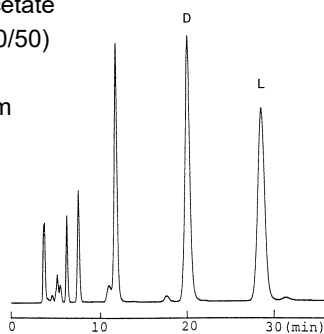
D-15 **O-Pyrene-1-carbonyllactic acid**
**OA-3200** $\alpha = 1.52$

Column : 4.6mm i.d.×250mm

Mobile phase :

0.1mol/L ammonium acetate
in methanol/dioxane (50/50)

Flow rate : 1mL/min

Detector : FL Ex 353nm
Em 393nm**OA-3100** $\alpha = 1.22$

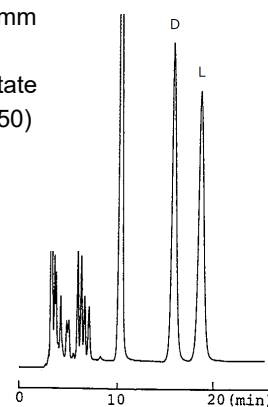
Column : 4.6mm i.d.×250mm

Mobile phase :

0.1mol/L ammonium acetate
in methanol/dioxane (50/50)

Flow rate : 1mL/min

Detector : UV 254nm

**OA-2500** $\alpha = 1.20$

Column : 4.6mm i.d.×250mm

Mobile phase :

0.1mol/L ammonium acetate
in methanol/dioxane (50/50)

Flow rate : 1mL/min

Detector : UV 254nm

