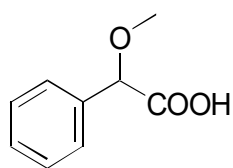
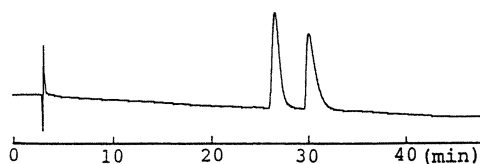


D-13 **α -Methoxyphenylacetic acid****OA-2500** $\alpha = 1.15$

Column : 4.6mm i.d.×250mm
Mobile phase :
0.01mol/L ammonium acetate
in methanol
Flow rate : 1mL/min
Detector : UV 254nm

**OA-5000** $\alpha = 1.06$

Column : 4.6mm i.d.×150mm
Mobile phase :
2mmol/L copper(II) sulfate
in [water/2-propanol (85/15)]
Flow rate : 1mL/min
Detector : UV 254nm
Injection : 5 μ L (4mg/mL)

