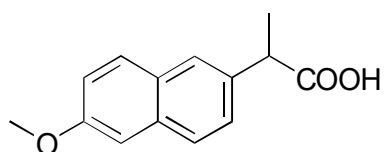


D-11

Naproxen

**OA-2500** $\alpha = 1.55$

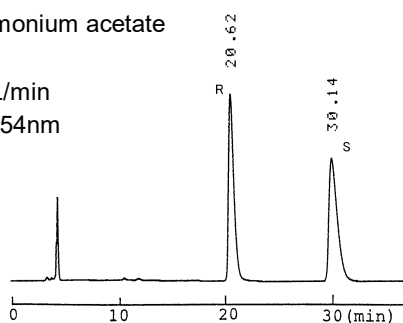
Column : 4.6mm i.d.×250mm

Mobile phase :

0.05mol/L ammonium acetate
in methanol

Flow rate : 1mL/min

Detector : UV 254nm

**OA-7000** $\alpha = 1.40$

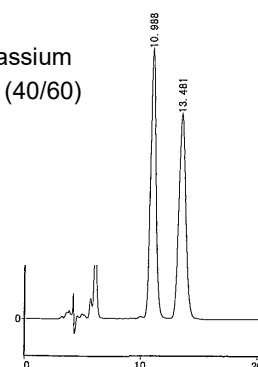
Column : 4.6mm i.d.×250mm

Mobile phase :

acetonitrile/20mmol/L potassium
phosphate buffer (pH 3.0) (40/60)

Flow rate : 0.7mL/min

Detector : UV 254nm

Injection : 3 μ L (1mg/mL)**OA-3300** $\alpha = 1.09$

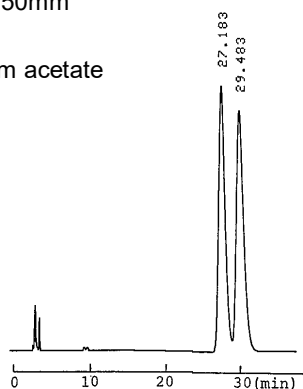
Column : 4mm i.d.×250mm

Mobile phase :

0.02mol/L ammonium acetate
in methanol

Flow rate : 1mL/min

Detector : UV 254nm

**AGP** $\alpha = 1.88$

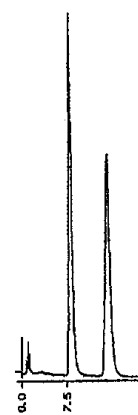
Column : 4mm i.d.×100mm

Mobile phase :

25mmol/L sodium phosphate
buffer (pH 7.0)

Flow rate : 0.9mL/min

Detector : UV 225nm

**HSA** $\alpha = 1.30$

Column : 4mm i.d.×100mm

Mobile phase :

2% 2-propanol and
5mmol/L octanoic acid in
100mmol/L sodium
phosphate buffer (pH 7.0)

Flow rate : 0.9mL/min

Detector : UV 225nm

