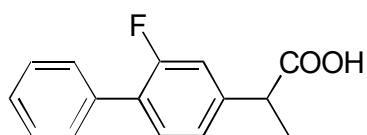


D-03

Flurbiprofen

**OA-2500** $\alpha=1.09$ 

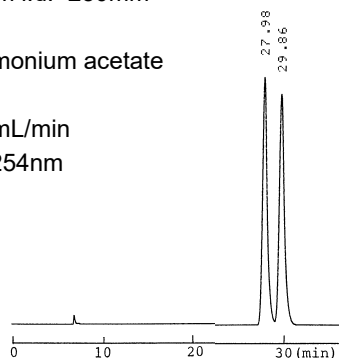
Column : 4.6mm i.d.×250mm

Mobile phase :

0.02mol/L ammonium acetate  
in methanol

Flow rate : 0.5mL/min

Detector : UV 254nm

**OA-3300** $\alpha=1.06$ 

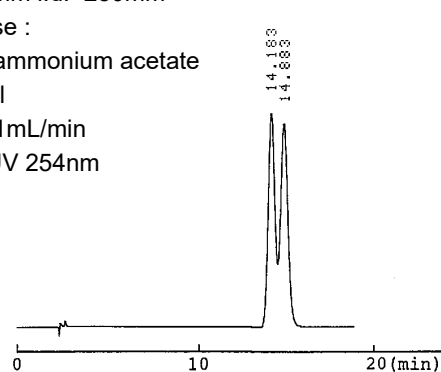
Column : 4mm i.d.×250mm

Mobile phase :

0.01mol/L ammonium acetate  
in methanol

Flow rate : 1mL/min

Detector : UV 254nm

**AGP** $\alpha=2.65$ 

Column : 4mm i.d.×100mm

Mobile phase :

5% 2-propanol and  
1mmol/L dimethyloctylamine  
in 10mmol/L sodium  
phosphate buffer (pH 6.5)

Flow rate : 0.9mL/min

Detector : UV 225nm

