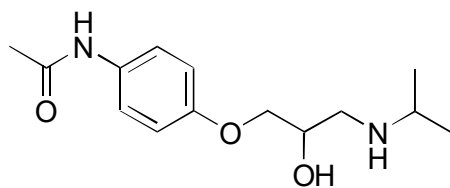


B-59

Practolol

**CBH**

Column : 4mm i.d.×150mm

Mobile phase :

5% 2-propanol in 50mmol/L

sodium phosphate buffer

(pH 7.0) + 50μmol/L EDTA

Flow rate : 0.9mL/min

Detector : UV 225nm

 $\alpha = 1.35$ 