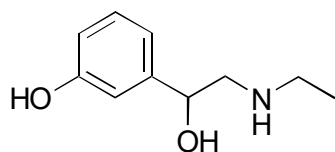


B-24

Etilefrine

**OA-7700** $\alpha = 1.67$

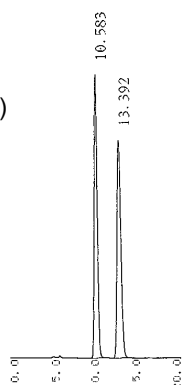
Column : 4.6mm i.d.×250mm

Mobile phase :

methanol/20mmol/L potassium
phosphate buffer (pH 3.0) (20/80)

Flow rate : 0.5mL/min

Detector : UV 254nm

Injection : 2 μ L (2mg/mL)**OA-4900** $\alpha = 1.19$

Column : 4.6mm i.d.×250mm

Mobile phase :

hexane/tetrahydrofuran/
methanol/trifluoroacetic acid
(60/35/5/0.2)

Flow rate : 1mL/min

Detector : UV 280nm

Injection : 5 μ L (1mg/mL)