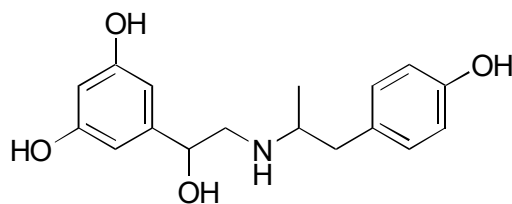
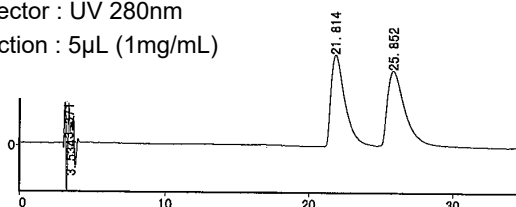


B-13

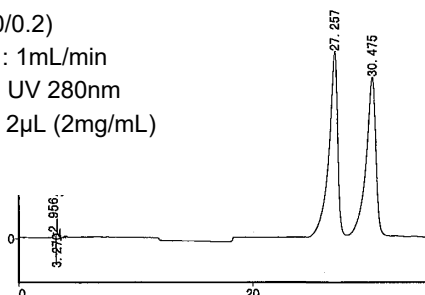
Fenoterol

**OA-4900** $\alpha = 1.22$ 

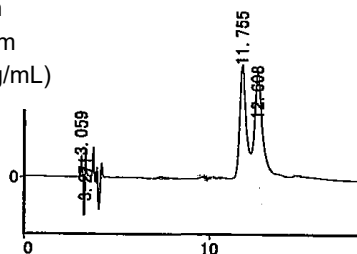
Column : 4.6mm i.d.×250mm  
 Mobile phase : hexane/tetrahydrofuran/  
 methanol/trifluoroacetic acid  
 (60/35/5/0.2)  
 Flow rate : 1mL/min  
 Detector : UV 280nm  
 Injection : 5 $\mu$ L (1mg/mL)

**OA-4500** $\alpha = 1.13$ 

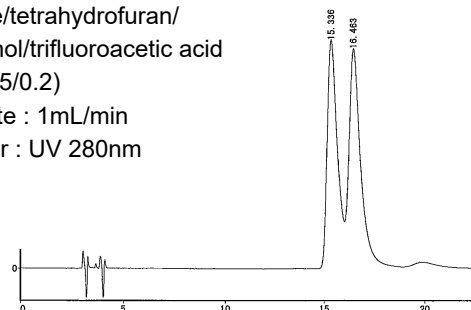
Column : 4.6mm i.d.×250mm  
 Mobile phase : hexane/tetrahydrofuran/  
 methanol/trifluoroacetic acid  
 (60/30/10/0.2)  
 Flow rate : 1mL/min  
 Detector : UV 280nm  
 Injection : 2 $\mu$ L (2mg/mL)

**OA-4700** $\alpha = 1.10$ 

Column : 4.6mm i.d.×250mm  
 Mobile phase : hexane/tetrahydrofuran/  
 methanol/trifluoroacetic acid  
 (60/35/5/0.2)  
 Flow rate : 1mL/min  
 Detector : UV 280nm  
 Injection : 2 $\mu$ L (1mg/mL)

**OA-4100** $\alpha = 1.09$ 

Column : 4.6mm i.d.×250mm  
 Mobile phase :  
 hexane/tetrahydrofuran/  
 methanol/trifluoroacetic acid  
 (60/35/5/0.2)  
 Flow rate : 1mL/min  
 Detector : UV 280nm

**OA-4000** $\alpha = 1.07$ 

Column : 4.6mm i.d.×250mm  
 Mobile phase :  
 hexane/tetrahydrofuran/  
 methanol/trifluoroacetic acid  
 (60/35/5/0.2)  
 Flow rate : 1mL/min  
 Detector : UV 280nm

