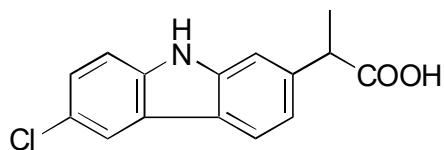
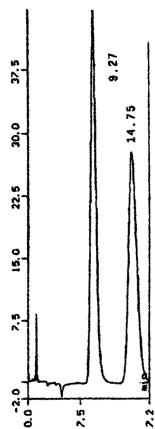


A-56

Carprofen

**AGP**

Column : 4mm i.d.×100mm
Mobile phase :
3% 2-propanol and 5mmol/L
N,N-dimethyloctylamine
in 10mmol/L sodium
phosphate buffer (pH 7.0)
Flow rate : 0.9mL/min
Detector : UV 225nm

**HSA**

Column : 4mm i.d.×100mm
Mobile phase :
10% 2-propanol and
5mmol/L octanoic acid in
10mmol/L sodium
phosphate buffer (pH 7.0)
Flow rate : 0.9mL/min
Detector : UV 225nm

