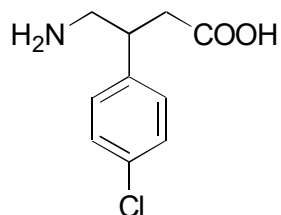


A-24

Baclofen

**OA-6000** $\alpha = 1.69$

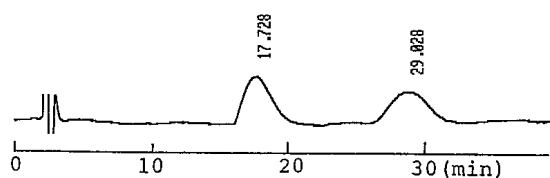
Column : 4.6mm i.d.×150mm

Mobile phase :

2mmol/L copper(II) sulfate
in [water/acetonitrile (85/15)]

Flow rate : 1mL/min

Detector : UV 254nm

**OA-5000** $\alpha = 1.23$

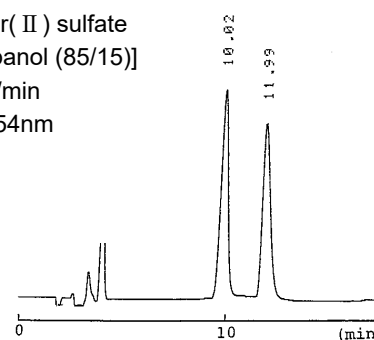
Column : 4.6mm i.d.×150mm

Mobile phase :

2mmol/L copper(II) sulfate
in [water/2-propanol (85/15)]

Flow rate : 1mL/min

Detector : UV 254nm

**OA-4800** $\alpha = 1.20$

Column : 4.6mm i.d.×250mm

Mobile phase :

hexane/1,2-dichloroethane/
methanol/ trifluoroacetic
acid (70/20/10/0.2)

Flow rate : 1mL/min

Detector : UV 254nm

Injection : 5 μ L (3mg/mL)