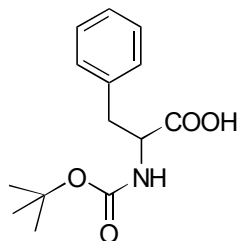


A-23

BOC-phenylalanine

**OA-4700** $\alpha = 1.11$

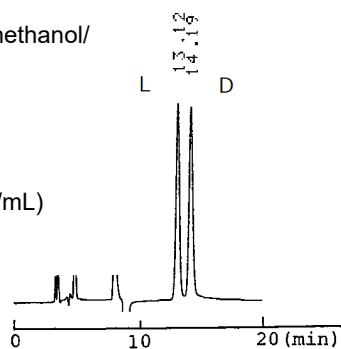
Column : 4.6mm i.d.×250mm

Mobile phase :

hexane/2-propanol/methanol/
trifluoroacetic acid
(98/1/1/0.2)

Flow rate : 1mL/min

Detector : UV 254nm

Injection : 2 μ L (16mg/mL)**OA-4400** $\alpha = 1.10$

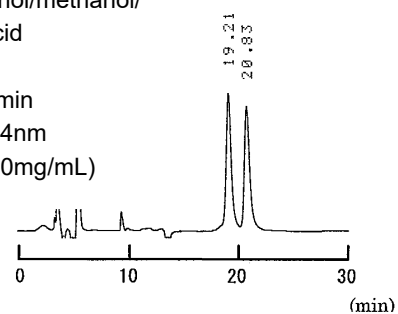
Column : 4.6mm i.d.×250mm

Mobile phase :

hexane/2-propanol/methanol/
trifluoroacetic acid
(98/1/1/0.2)

Flow rate : 1mL/min

Detector : UV 254nm

Injection : 5 μ L (20mg/mL)**OA-3300** $\alpha = 1.09$

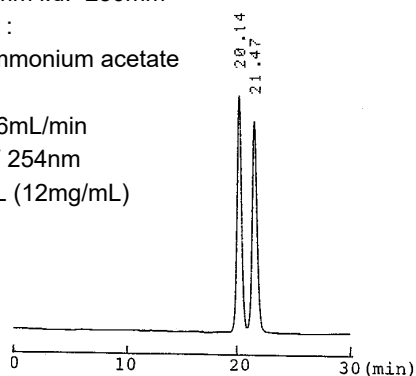
Column : 4.6mm i.d.×250mm

Mobile phase :

0.01mol/L ammonium acetate
in methanol

Flow rate : 0.6mL/min

Detector : UV 254nm

Injection : 2 μ L (12mg/mL)**OA-4000** $\alpha = 1.06$

Column : 4.6mm i.d.×250mm

Mobile phase :

hexane/2-propanol/methanol/
trifluoroacetic acid
(98/1/1/0.2)

Flow rate : 1mL/min

Detector : UV 254nm

Injection : 2 μ L (16mg/mL)