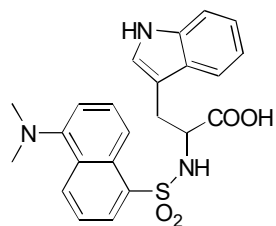


A-19

N-Dansyltryptophan

**OA-3100** $\alpha = 1.16$

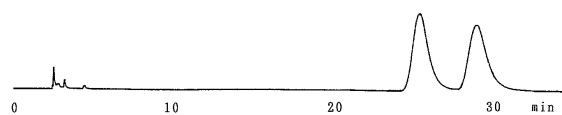
Column : 4mm i.d.×250mm

Mobile phase :

0.01mol/L ammonium acetate
in methanol

Flow rate : 1mL/min

Detector : UV 254nm

**OA-3200** $\alpha = 1.16$

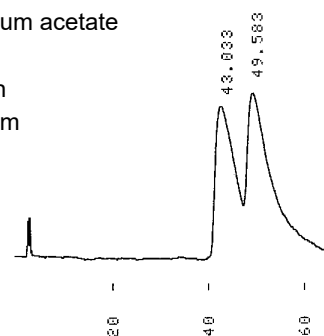
Column : 4mm i.d.×250mm

Mobile phase :

0.01mol/L ammonium acetate
in methanol

Flow rate : 1mL/min

Detector : UV 254nm

**OA-3300** $\alpha = 1.12$

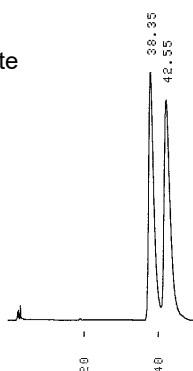
Column : 4mm i.d.×250mm

Mobile phase :

0.01mol/L ammonium acetate
in methanol

Flow rate : 1mL/min

Detector : UV 254nm

**OA-2500** $\alpha = 1.06$

Column : 4.6mm i.d.×250mm

Mobile phase :

0.01mol/L ammonium acetate
in methanol

Flow rate : 1mL/min

Detector : UV 254nm

